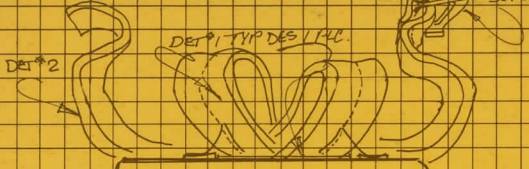
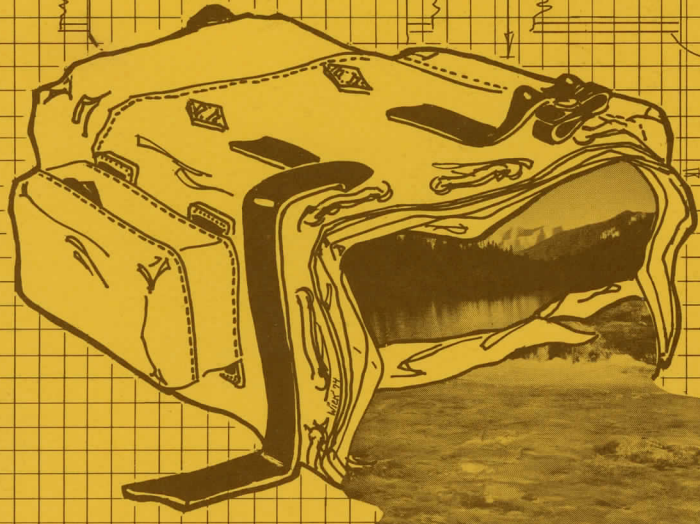


WILDERNESS EXPERIENCE

AN ADVENTURE
IN PACKING



X
TYP2

F

H

DET #1

DET 2/3

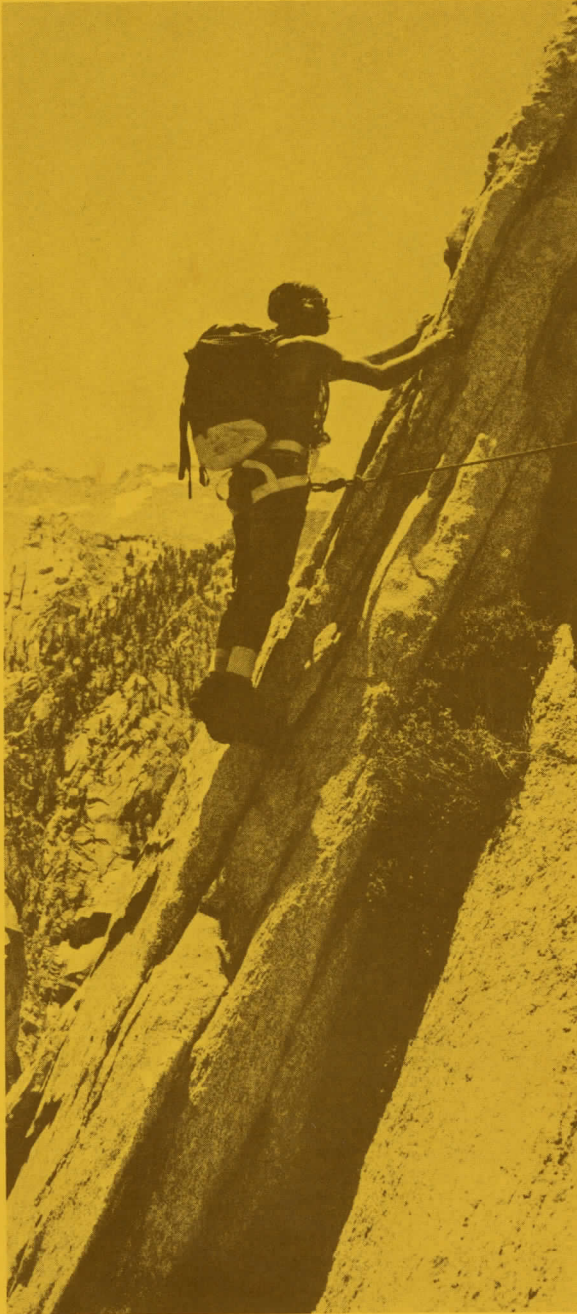
ZURGE ST.

W

D

R

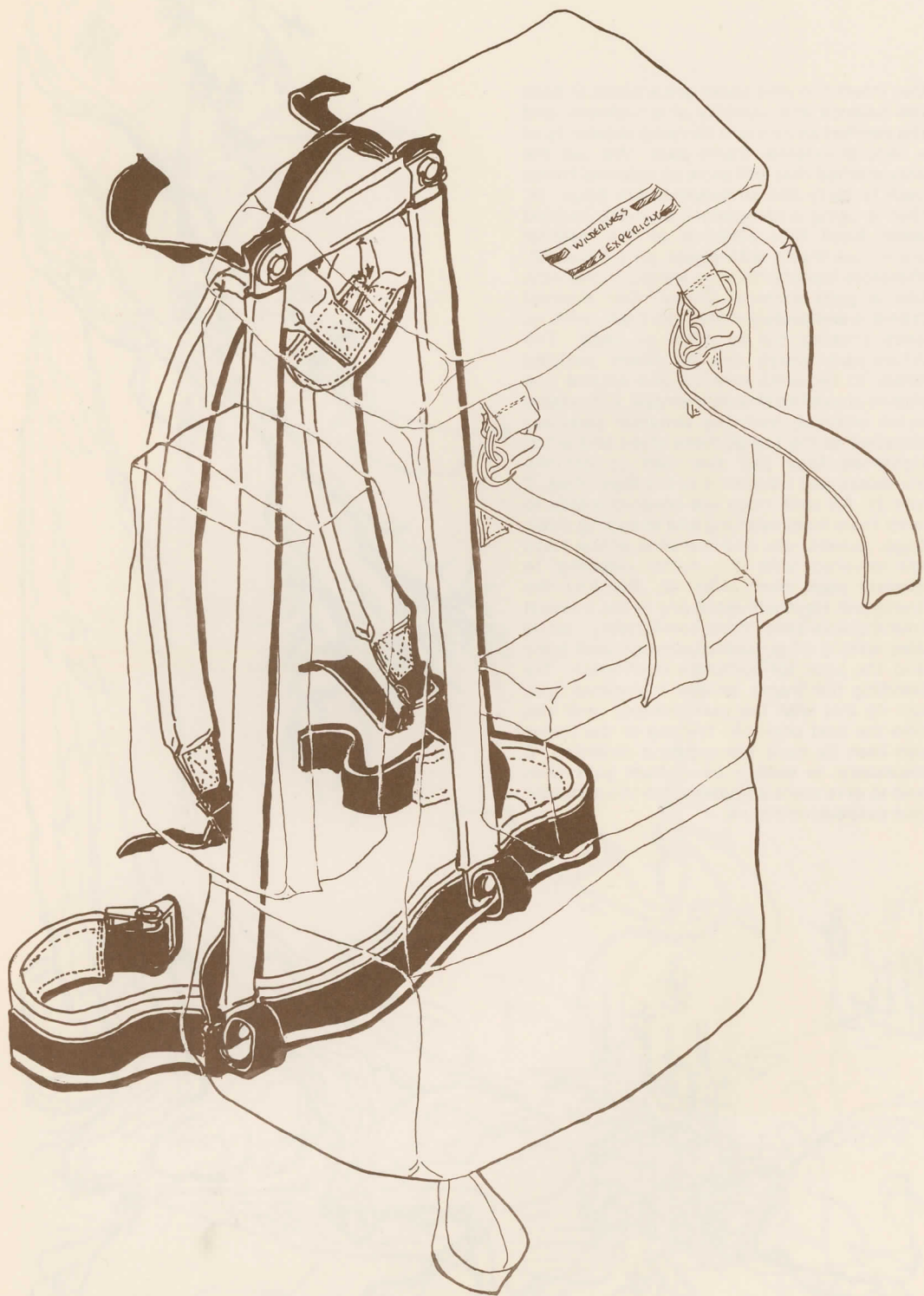
WILDERNESS EXPERIENCE



As you look through this catalog you will notice that our specialty is packs, from the handy belt pouches to the Alpinist, the largest internal frame pack available. Unlike companies that make packs just to complete their line of equipment our only concern is making the best packs possible. They are made to be used and used hard. Look them over closely and compare them with others. Check the sewing and materials (Our shoulder straps and waist bands are stitched in six times and the regular stress seams are stitched twice!) We use only the finest materials, our sewing quality is excellent and we confidently stand behind every pack we make. Any problem in workmanship or materials for as long as you own the pack we will gladly correct or replace it, and if you damage the pack we will repair it for a small fee. We're mountaineers; we enjoy making packs and we are very proud of what we make.

ALPINE RUCKSACK

internal frame design



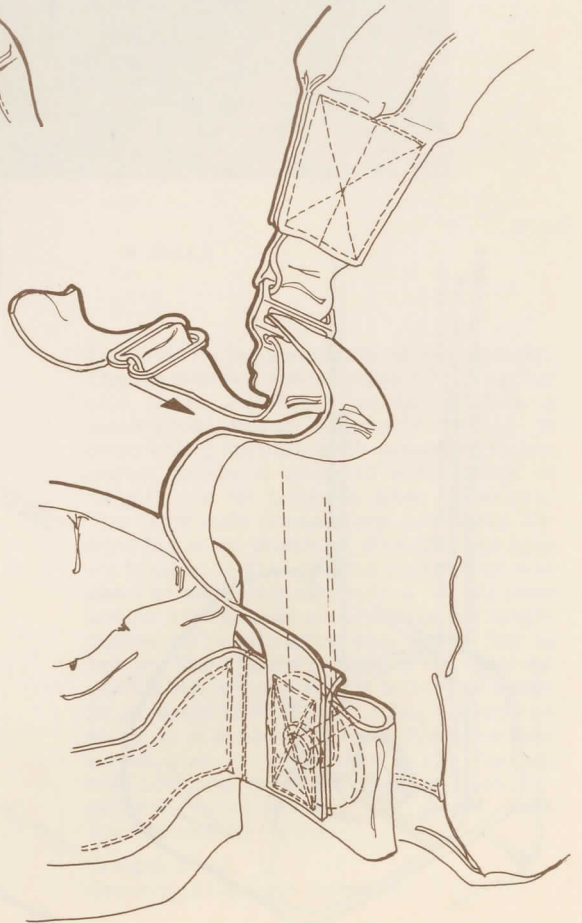
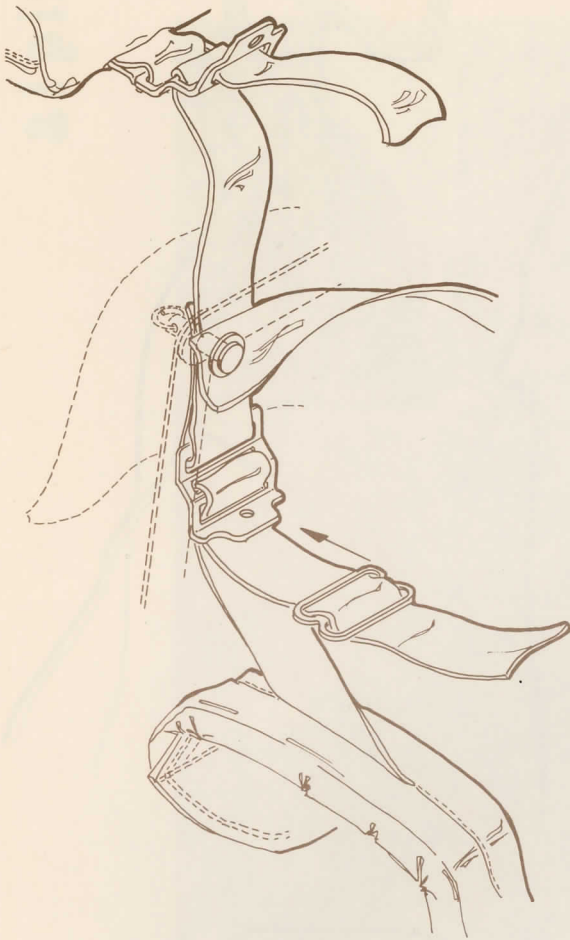
Illus. 1
Internal Frame Design

internal frame design

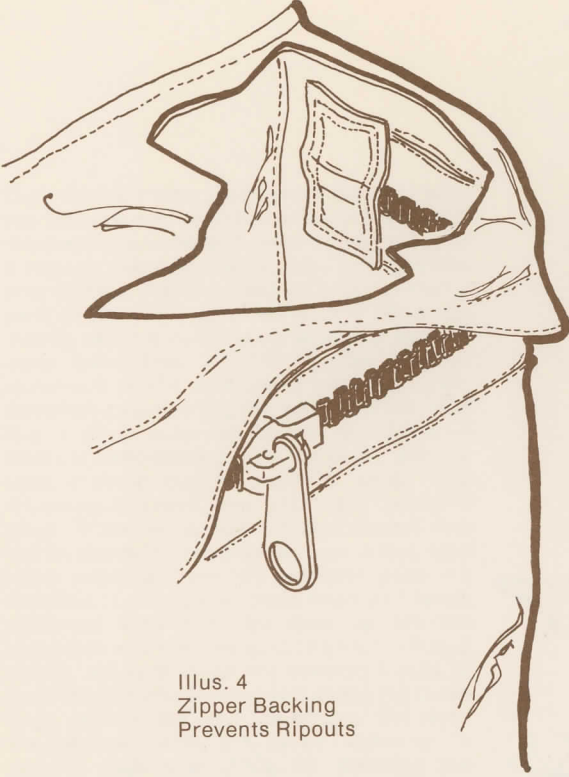
Our internal frame packs are a blend of both the balance and stability of a rucksack and the comfort and weight carrying capability of a regular external frame pack. We use the only method that will allow an internal frame pack to carry like an external one (Illus. 1), that is using a completely separate padded waist band that attaches to the internal aluminum frame with clevis pins (Illus. 6), therefore transferring the weight to the hips like a good external frame. Our internal frame is **completely** inside the pack, with no ends sticking out to catch or snag. The Aluminum stays are all foam padded (Illus. 1) for extra comfort and extend five inches above the shoulder straps. Adjustable nylon webbing from the shoulder pads are attached to the top of these stays and when tightened they pull the load up off the shoulders and transfer it to the hips (Illus. 2 and 3). All split rings are covered inside to keep them from catching and snagging down bags, jackets, etc. and the ends of the stays are covered with 2" nylon webbing to prevent pack wear (Illus. 6). Bending the aluminum stays will make any of the internal frame packs ride more comfortably, while also leaving an air space between your body and the pack for complete ventilation. Try bending the frame different amounts (you can do this with the pack loaded) until you find the best position. The top of the frame can then be bent the opposite direction, if necessary, to keep it away from your neck and to give more adjustment to the shoulder pad suspension straps.



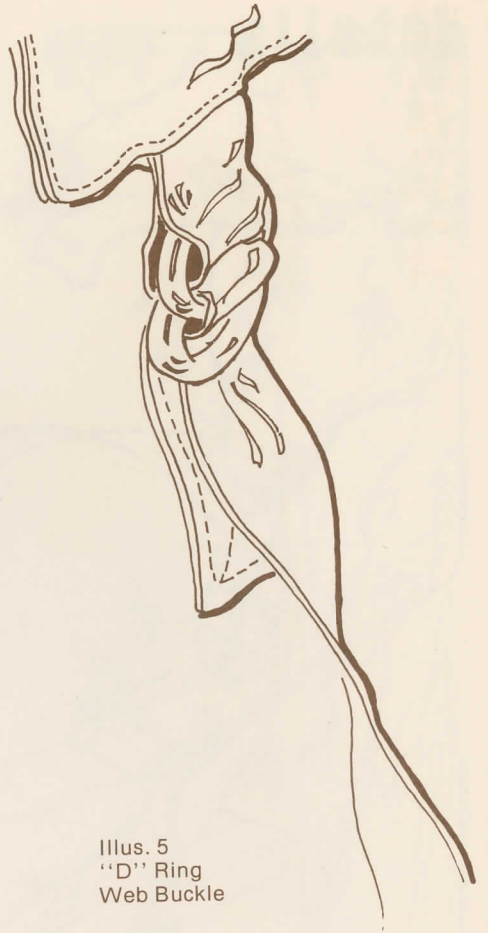
details



details

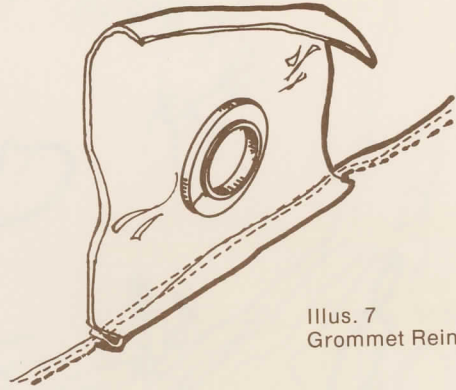
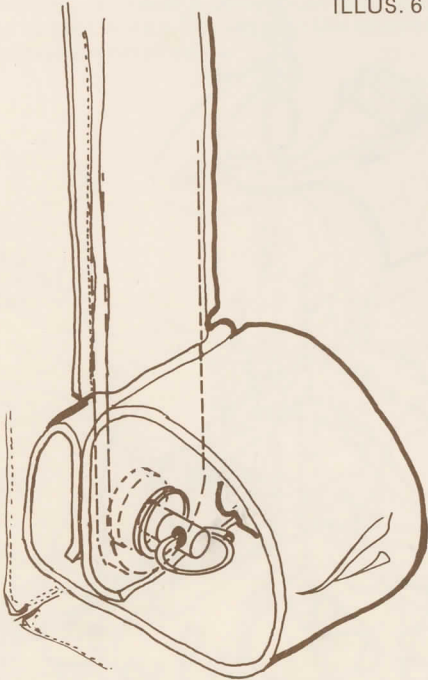


Illus. 4
Zipper Backing
Prevents Ripouts

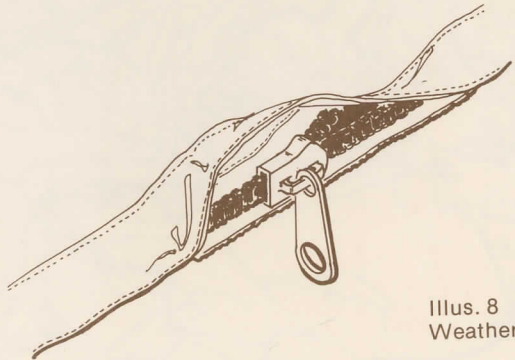


Illus. 5
"D" Ring
Web Buckle

ILLUS. 6

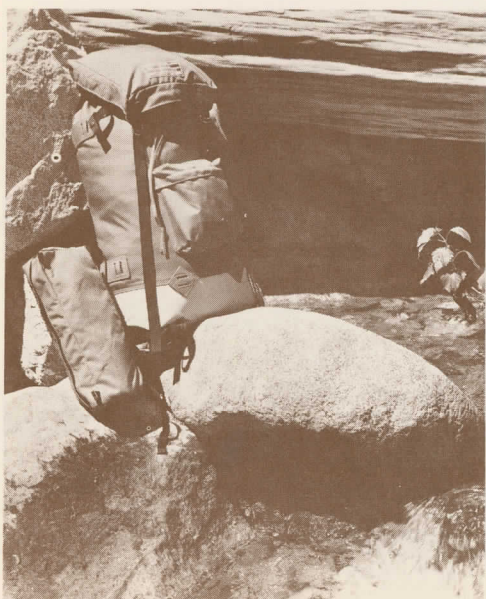
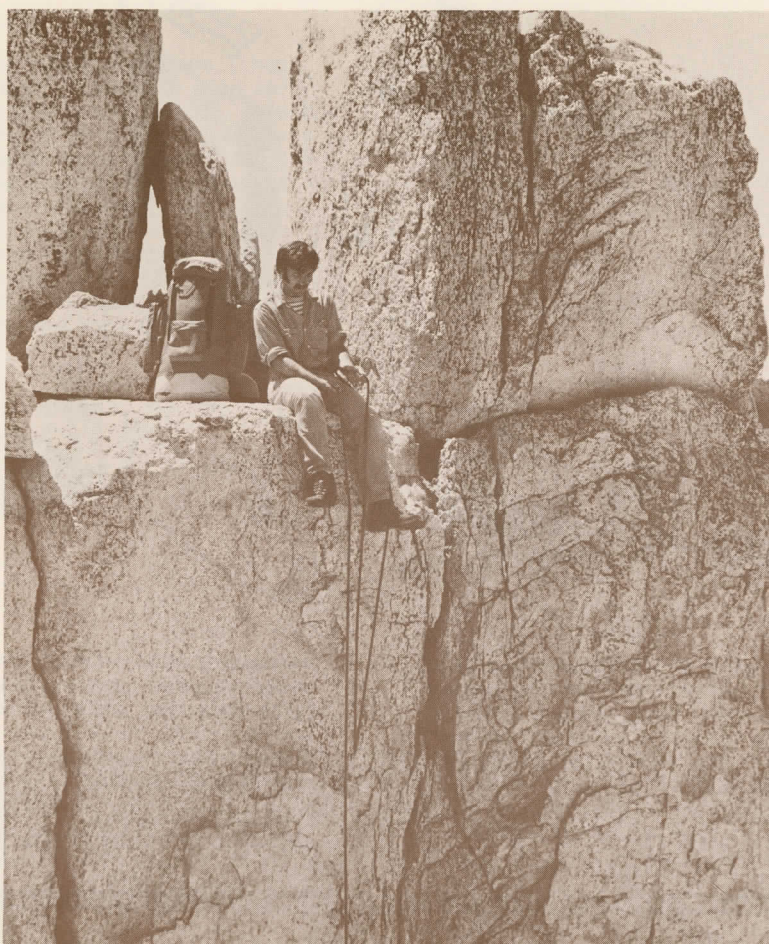


Illus. 7
Grommet Reinforcement



Illus. 8
Weather Flap

alpinist

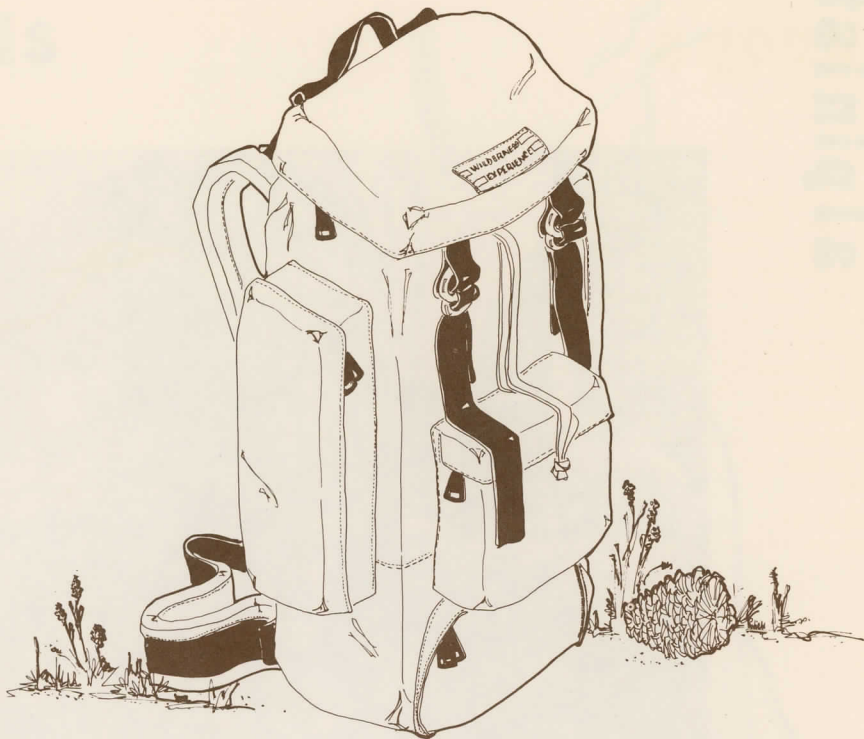


Designed for the serious alpine mountaineer. The **Alpinist** has a large zippered top pocket and three outside pockets. It has a waterproof flared extension to aid in overstuffing the pack when required (the top pocket adjusts to allow 12 extra inches of height) and for bivouacs when necessary. The large side pockets are removable for tight fits or for attaching skiis (Did you ever try to clean Klister off of a pocket that was sewn on and designed to have the ski slide behind it?) The side pockets have full length double zippers to allow easy access top to bottom. The **Alpinist** is made of the toughest CORDURA NYLON with a bottom of either 22 oz. SHELTERLITE or LATIGO leather to stand up to the abuse a serious mountaineer would give it. With an ice axe carrier, crampon and accessory patches and excellent sewing this is the finest pack available for the alpinist.

Weight: 74 oz.

Capacity: 4100 cubic inches.

backpacker



The **Backpacker** is for the adventurous hiker who likes to travel off trails, crossing rugged passes and boulder fields, but still wishes to carry many of the extras a rucksack couldn't hold. It gives the stability of an internal frame pack with a capacity equal or

surpassing most external frame packs. The lower zippered compartment will hold a large down bag while the outside and top pockets will hold many extras. The **Backpacker** opens new vistas to the backcountry traveler.

Weight: 60 o.

Capacity: 3940 cubic inches.

belt pouch



For quick access to small items such as film, first aid material, or passport the **Belt Pouch** is always at hand. Made of CORDURA NYLON with reinforced belt loops, this handy companion cannot become separated from its wearer.

Weight: 4 oz.

Capacity: 65 cubic inches.

europa

This is the finest traveling pack made. It has no metal frame ends exposed to snag car upholstery when you're hitch hiking. It is small enough to put in an airport locker (try that with an external frame backpack!) and more than large enough for a year of vagabonding. The full zippered front allows easy access for packing and complete organization. Three large outside pockets will hold all the items you want to be able to find in a hurry and leather accessory patches are on the top and the bottom if you need them.

Weight: 54 oz.

Capacity: 3256 cubic inches.



Photo 1974 by: Tammy Wick

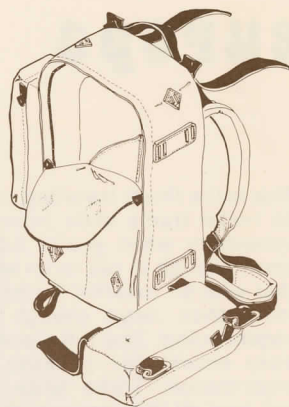


mountain tourist

The **Mountain Tourist** was designed for skiing, but the qualities that make it good for ski mountaineering also make it an excellent climbing pack. It has a vertical divider to keep the pack profile narrow and the contents organized and stable. The large side pockets are detachable for skiing or tight fits. There are ample leather accessory patches on the top, bottom and back and an ice axe attachment.

Weight: 58 oz.

Capacity: 2892 cubic inches.



alpine



The classic alpine rucksack. Made of tough CORDURA NYLON with three zippered pockets and a rugged leather bottom. Adjustable straps from the shoulder pads to the top of the pack eliminate that hunched

over feeling typical of most rucksacks. The **Alpine** has 1/2" thick foam padded shoulder pads, ice axe carrier and an adjustable nylon waist band.

Weight: 39 oz.

Capacity: 2780 cubic inches.

vagabond

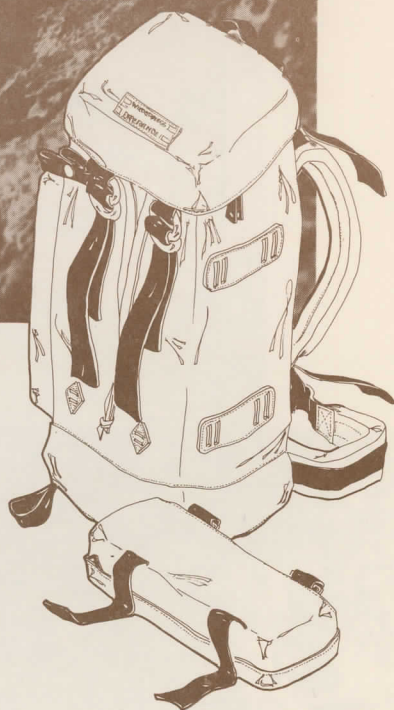


Developed with the traveler in mind the **Vagabond** has a large easy to get to top pocket and three generous outside pockets to aid in easy and efficient packing. Made of rugged CORDURA NYLON with a coated nylon extension, the **Vagabond** can be overpacked with extra equipment and still remain completely waterproof. A special system of adjustable straps from the shoulder pads to the top of the pack eliminate any backward pull or shifting. A thick padded waist belt helps to lighten any load by transferring the weight to the hips and off the shoulders. With ice axe attachments and accessory patches this is the perfect pack for the vagabonding traveler. Available with either a 22 oz. SHELTERLITE bottom or a LATIGO leather bottom.

Weight: 37 oz.

Capacity: 2820 cubic inches.

Chamonix



Possibly the most all around mountain pack made. The **Chamonix** comes with a waterproof flared extension for overstuffing or bivouacing when necessary. It has a large 4" thick zippered top pocket and accessory ski patches that will hold extra side pockets and skis at the same time. Adjustable straps from the shoulder pads to the top of the pack eliminate any backward pull, while a foam padded hip belt transfers weight from the shoulders to the hips for maximum comfort and stability. Crampon patches and an offset ice axe loop round out this most versatile pack. Made of 11 oz. CORDURA NYLON the **Chamonix** comes with either a vinyl coated nylon SHELTERLITE bottom or a thick LATIGO leather bottom.

Weight: 34 oz.

Capacity: 2420 cubic inches.

day hiking packs



AIGUILLE (E)—A simple large volume pack with a large zippered top pocket; perfect for summit climbs and day trips. Made of tough CORDURA NYLON, the **Aiguille** comes with an ice axe carrier and leather patches for attaching side pockets when needed. An adjustable waist band keeps the pack stable when traveling over rough terrain.

Weight: 28 oz. Capacity: 2420 cubic inches.

SKI TOURING FANNY PACK (C)—The **Fanny Pack** allows you to carry a wind-breaker and lunch and still have complete freedom of movement when skiing.

Weight: 7 oz. Capacity: 208 cubic inches.

BIKE PACK (B)—The **Bike Pack** combines quality sewing and materials in a light weight inexpensive day pack that is excellent for bicycling, short day hikes and books. It will easily hold two large notebooks and supplies and still have room for more in the back pocket. A nylon waist strap keeps it from swinging when bicycling or hiking.

Weight: 8 oz. Capacity: 513 cubic inches.

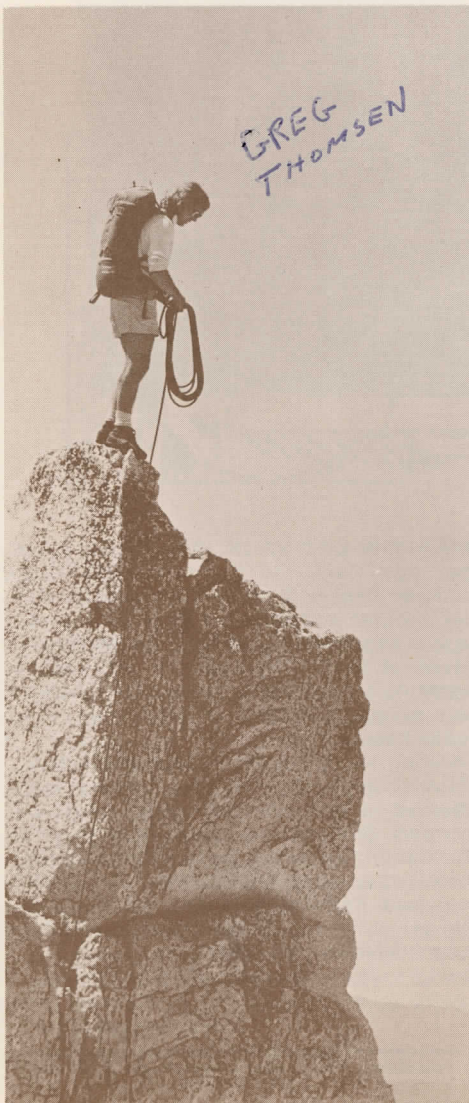
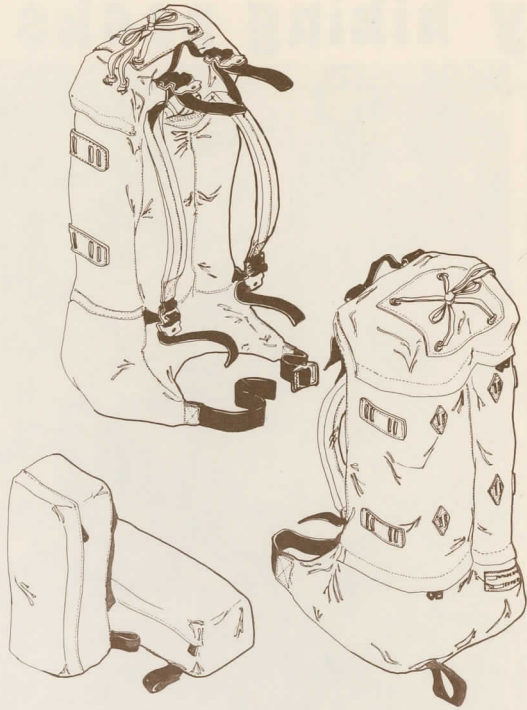
MEADOW DAY PACK (A)—A most practical day pack. It has a single large compartment with more than enough room for a jacket and lunch, a large back pocket and a zippered top pocket. The **Meadow** is made of CORDURA NYLON and has the same 1/2" thick padded shoulder straps as our other packs and an adjustable nylon waist band.

Weight: 14 oz. Capacity: 1038 cubic inches.

TEARDROP (D)—A very roomy pack divided in half for easy organization and comfort. Designed to ride close to the back for stability making it perfect for ski touring, bicycling and anytime a secure fitting pack is required. The **Teardrop** comes with ice axe carrier, 1/2" foam padded shoulder pads and an adjustable nylon waist band.

Weight: 13 oz. Capacity: 684 cubic inches.

**R. O. R.
wrap -
around**



A wrap-around pack designed for maximum stability while skiing or mountaineering. Divided into two compartments, the bottom half serves as a sleeping bag stuff sack and a complete padded waist band when stuffed. The upper compartment is vertically divided to keep the weight close to the back but comfortably away from the spine. A smooth nylon back and soft shoulder pads make it comfortable even without a shirt. Small loops of cord should be tied to the zipper pulls to aid in use in cold weather. Extra pockets can be added for longer trips when a greater carrying capacity is required.

Like other Wilderness Experience packs all zippers are double stitched, all stress points are completely reinforced and all shoulder straps, both top and bottom and sewn in six times. Made of CORDURA NYLON and NYLON PACKCLOTH.

Weight: 31 oz.
Capacity: 2597 cubic inches.



All illustrations, photographs (except as noted), design, and production by:

PHOTO - UNIQUE

Photography by:

Philip L. Wick

Rosemead, California

WILDERNESS EXPERIENCE
9421 Winnetka Avenue Suite M
Chatsworth, California 91311

STAMP

HERE



WILDERNESS EXPERIENCE

price list

PRICES EFFECTIVE: JULY 15, 1974

DAY PACKS

Items	Page in Catalog	Prices
AIGUILLE	11	\$24.00
POCKETS	—	7.95
BELT POUCH	6	3.00
BIKE PACK	11	10.00
MEADOW DAY PACK	11	15.00
SKI TOURING FANNY PACK	11	7.95
TEARDROP DAY PACK	11	18.50

SOFT PACKS

ALPINE / LEATHER BOTTOM	8	\$35.00
CHAMONIX / SHELTERLITE BOTTOM	10	36.00
CHAMONIX / LEATHER BOTTOM	10	42.00
POCKETS	—	7.95
R.O.R. WRAP-AROUND	12	36.00
POCKETS	—	7.95
VAGABOND / SHELTERLITE BOTTOM	9	37.50
VAGABOND / LEATHERLITE BOTTOM	9	44.00

INTERNAL FRAME PACKS

ALPINIST / SHELTERLITE BOTTOM	5	\$50.00
ALPINIST / LEATHER BOTTOM	5	55.00
POCKETS	—	10.00
BACKPACKER	6	55.00
EUROPA	7	52.50
MOUNTAIN TOURIST	8	45.00
POCKETS	—	7.95

— All Prices Subject to Change Without Notice —