

SLEEPING BAGS

WILDERNESS
EXPERIENCE[®]
CHATSWORTH, CALIFORNIA

SLEEPING BAGS

SLEEPING BAGS

To Sleep Or Not To Sleep?

It has often been said by experienced backpackers that choosing the correct sleeping bag is a backpacker's single most important equipment decision. One miserable, cold night spent anxiously counting the hours and minutes until dawn is enough to convince even the frugalest of backpackers to reconsider their money saving choice of sleeping bags.

Which Bag is Right for Me?

At Wilderness Experience we have designed and produced a complete range of sleeping bags. From the Southern Lite, designed to take the chill out of a cool southern evening to the Winter Cloud, the ultimate sleeping bag for extreme cold and frigid weather.

Which one is right for you depends on where and when you plan to spend your nights out.

So your next decision to make is what is the lowest temperature you'd expect to be sleeping in.



Temperature Rating

Each of our bags is temperature rated. This rating is a low end comfort range for the average person. If you generally feel you sleep colder than others, choose a bag with an even lower comfort range rating. A little extra margin of comfort and safety can go a very long way.

Down or Polarguard

After you've narrowed down your sleeping bag choice to a specific temperature range, the next decision to make is whether your needs favor a polarguard or a down filled sleeping bag. Do not make the common mistake of feeling that one fill is inherently better than the other. Each has its own unique and special qualities.

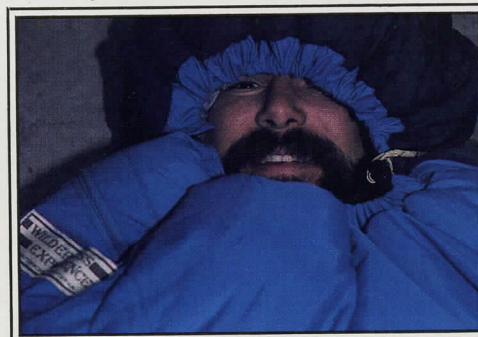
Down is the best choice when weight and compressability are the main concern.

Polarguard has the advantage over down in maintaining its loft in wet or damp areas; however, it is slightly heavier than down and less compactable.



Unique Pocket

One Wilderness Experience innovation that sets our bags apart from our competition is the handy pocket neatly built into the shoulder of every bag. It's perfect for any last minute object you may want to get to easily in the night, whether it be chapstick, kleenex or flashlight.



Spacious Hood

The spacious hood on our bags, so perfect for a warm night, is designed to pull close to the face via a cord-locked drawstring for maximum thermal efficiency as the weather turns less kind. A narrow arcing cut over the chest insures that there is a smooth, face conforming contour without bunching and excess bulkiness.



Edge Stabilization

After the Polarguard has been carefully cut it is then overlock stitched to the edge of the material to guarantee against the filling pulling away from the seam.

Roomy Foot Section

A roomy foot section is a prerequisite to a comfortable night, allowing you plenty of room to stretch your legs in. We feature it in our bags so you can also store your clothing articles in extreme conditions. Down bags have fully baffled footsections while the Polarguard® bags are all offset double quilted.



Wraparound Collar

Our wraparound collar is perfect for the times when you want to "avoid the draft." With the exception of the rectangular bags, all bags with the super Triblend lining also feature a built-in collar at the shoulder. These collars are actually an extra down baffles or an extra batt of Polarguard®. This way they encircle and insulate without constricting movement.



Complete Closure

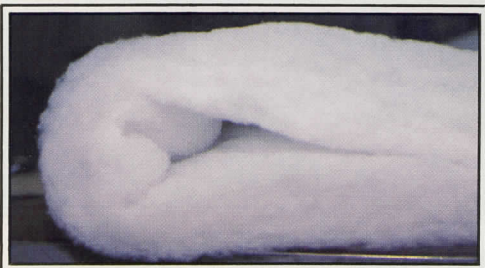
At the top of every bag's long wearing, two-way, #7 YKK zipper is a Velcro® tab closure to complete the seal at the top of the zipper. This tab is designed to fold over and maintain its holding power even when a left zip bag is mated to a right zip bag. Every Wilderness Experience® bag can be zipped together if they are of opposite zip.



Polarguard[®] Polyester by Celenese

We make full use of the long continuous filament aspect of Polarguard[®], giving you a great strength and resiliency. Unlike the other polyesters which consist of short fibers, Polarguard[®] does not separate, mat or clump after numerous washings and stuffings.

We have developed a revolutionary method of sleeping bag construction: the "Tri-channel baffle system." We take advantage of the longitudinal rigidity of Polarguard to create three box-shaped dead air channels that increase the effective loft over the body by a significant degree, for a loft to weight ratio never before achieved with synthetic insulation in any bag.



Cleaning of a Polarguard[®] Bag

The ideal washing procedure for a Polarguard bag is to machine wash in a large front-open type machine with warm water (never over 140° F). Use a non-detergent soap on the gentle cycle. Adding a fabric softener will help fluff up the loft of the bag. Drip dry or tumble dry on air or low heat setting. Do NOT dry clean! Dry cleaning solution will dissolve the synthetic resins and you will end up with one flat, totally useless but clean Polarguard bag. Heat over 140° F can give you the same unwarranted aftereffect—that means don't leave your bag stored in the trunk of a car or near a heater.

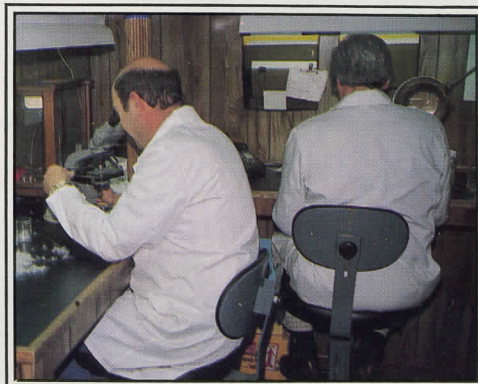
Goose Down

Down sleeping bags at Wilderness Experience[®] have a design emphasis on even insulation. Here the process is called "down control." The most noticeable signature of a Wilderness Experience down bag is the width of the baffles. Located just five inches apart,



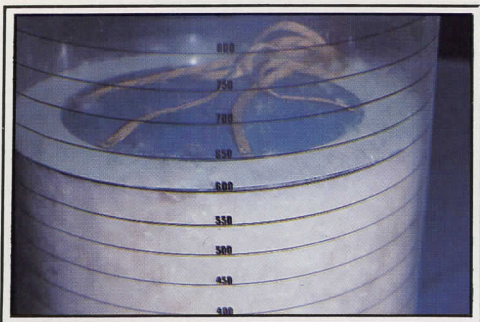
the baffles cut the bag into short segments that encircle the bag and stop the down from shifting within.

The baffle seams are offset from top to bottom creating a slant wall construction. The narrow baffles have been sewn so all stitching is internal or "tuck seam" stitched. Every stitch line is well protected since none are exposed to abrasion and wear.



To stop down from shifting from the top of the bag to the bottom each bag is equipped with a side block baffle. This baffle, which runs the length of the bag on the side opposite the zipper, also maintains loft at the side.

All of the work we do to maintain down control is so we can take advantage of the minimum 550 cubic inches of fill power we demand of our goosedown. In the interest of consumer protection we would like to point out that, while we test down in our own lab for day to day control, all standards are assured by an independent test lab. Casual testing in our own lab is unacceptable; we feel to eliminate all claims of prejudice, an outside agent should protect our customer.



Cleaning of a Down Bag

Goose down bags can be cleaned one of two ways. You can hand wash your bag in a large sink or bathtub with a non-detergent soap and luke-warm water. Gently knead the suds through the bag. Avoid any harsh twisting which may damage the baffles. Then, rinse with clean water several times until all traces of soap have disappeared. Roll the bag carefully to squeeze out excess water. When picking up, be careful to support the total bag to avoid damage to the baffles.

Tumble dry on low heat in a large commercial size dryer with a clean tennis shoe to fluff up the goose down. If you decide to use a commercial dry cleaner, make sure they are experienced in cleaning quality down products. Ask your nearest specialty shop who they would recommend, or call us for information.

Care and Storage of your sleeping bag

Whenever you return from your Wilderness Experience[®] you should lay your bag out to air. This will get rid of excess moisture. We suggest you store your bag in a large cotton storage bag when not in use. Remember, always store your bag in a cool, dry area. Never leave your bag stuffed for long periods of time in the waterproofed stuff sack we've provided. It should be used only for the trip itself.

All down bags or Polarguard bags should be kept clean—the bag will last longer and give you more pleasure.



Fabrics

We at Wilderness Experience have taken great care in the selection of materials for our bags. We offer an unheard of lifetime guarantee on all our products, so you can rest assured that the materials we have chosen are the best.

- Nylon taffeta-100% nylon, 160x90 high thread count, downproof by construction with a zepel finish. High tear strength. Smooth and soft to the feel. Lightweight.
- Super Tri-Blend-48% polyester for warmth, 26% nylon for durability and strength, and 26% cotton for comfort. High thread count, downproof by construction. Lightweight. Two-ply laminate.
- Gore-tex Taffeta-Two-ply laminate outer layer is 100% nylon with 108x88 thread count. Second layer is Gore-tex microporous PTFE (Teflon) film.





● To +40°F

Polarguard®

Southern Comfort Summer

The SOUTHERN COMFORT SUMMER is our answer to the family's camper's request for a high quality sleeping bag.

The roomy, rectangular shaped bag weighs less than three and one half pounds, and is rated to 40° F. Camping comfort is provided by using cottony Super Tri-Blend on the interior. The exterior is our tough 1.7 oz. nylon taffeta.

Total Weight: 3 lbs., 6 oz.
Color: Tan/Brown

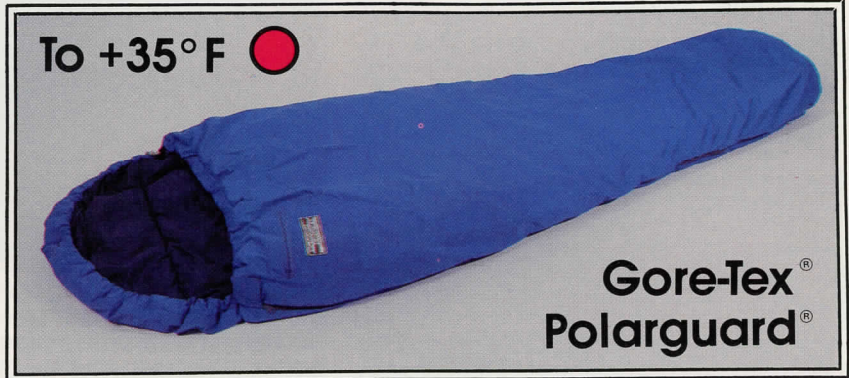
The Pro

Our PRO is the ideal bivouac bag for the serious mountaineer trying to maintain as light of a load as possible.

The outer shell is Gore-tex® taffeta with no exterior quilting. The lack of quilt lines makes this an extremely thermally efficient bag.

The bag is filled with two layers of 10 oz. Polarguard® (one top, one bottom) with the interior fabric being 1.7 oz. nylon taffeta.

Total Weight: 3 lbs., 10 oz.
Color: Royal



● To +35°F

Gore-Tex®
Polarguard®



● To +35°F

Polarguard®

Southern Lite

The SOUTHERN LITE is our homage to those areas of the country where it seldom gets very cold, yet the general camper or lightweight backpacker needs a mummy designed bag that can be relied upon.

The two-layer construction (one top, one bottom) utilizes a sheet of eight-ounce Polarguard®. To keep the weight down we used 1.7 oz. nylon taffeta on the exterior and interior both.

Total Weight: 3 lbs., 2 oz.
Color: Assorted

Southern Comfort Winter

For boaters and others who need a warmer bag than the Southern Comfort Summer and still want the roominess of the rectangular shape, we created its big brother—the SOUTHERN COMFORT WINTER.

A full four layer Polarguard® construction (two top, two bottom), the Winter again has a close fitting hood and comfortable liner of Super Tri-Blend. The exterior is 1.7 oz. nylon taffeta.

Total Weight: 4 lbs., 3 oz.
Color: Tan/Brown



● To +20°F

Polarguard®



● To +15°F

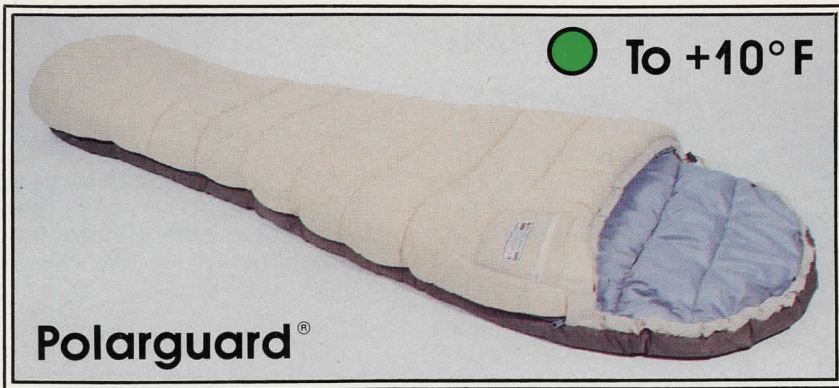
Polarguard®

Northern Lite

As its name implies, the NORTHERN LITE is intended for use in colder conditions and is rated to +15° F.

The warmth of the Northern Lite is made possible by its four layer construction (two top, two bottom) of eight-ounce Polarguard® batts. This simple construction has been edge stabilized throughout and has interior and exterior shells of 1.7 oz. nylon taffeta. It also has an integral draft tube which is tucked into the foot seam for extra protection.

Total Weight: 4 lbs., 10 oz.
Color: Assorted



● To +10°F

Polarguard®

Point Five

The POINT FIVE is our lightest full-featured bag, yet the sophisticated design provides sleeping comfort well below freezing.

A classic design using offset double quilting with no overlapping stitch lines or sewn through seams anywhere, the Point Five uses four layers (two top, two bottom) of eight oz. Polarguard®. The hood is fully cut and adjustable to complete the seal around the vital head area.

Total Weight: 5 lbs., 6 oz.
Color: Tan/Brown

Bighorn Summer

The BIGHORN SUMMER sleeping bag was developed to meet the needs of the recreational camper wanting a roomier design, yet still demanding the quality craftsmanship of a Wilderness Experience product.

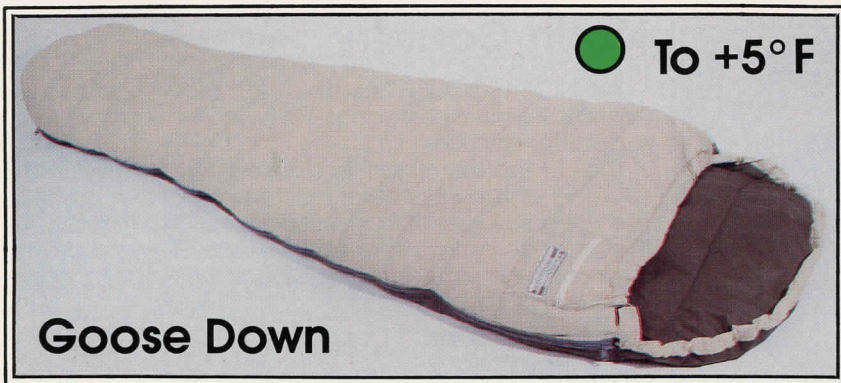
Rated to 10°F, the BIGHORN SUMMER is insulated with four layers (two top, two bottom) of eight ounce Polarguard®. The exterior shell is 1.7 oz. nylon taffeta while the interior is cotton soft, Super Tri-Blend.

Total Weight: 5 lbs., 8 oz.
Color: Rust



To +10°F ●

Polarguard®



● To +5°F

Goose Down

Alpine

For the rucksack traveler or weight conscious backpacker. Our down ALPINE fills the bill, with a +5°F approximate temperature rating and weighing under three lbs.

The baffles of this differentially cut modified mummy design are all contour cut to force greater loft over the torso and are held in place by tuck seam stitching so the thread lines are not exposed to abrasion.

Total Weight: 2 lbs., 10 oz.
Color: Tan/Brown

Bighorn Winter

When the nights got frigid and dipped below the 0°F mark, someone who felt uncomfortable in the conventional mummy design used to be literally left in the cold. Not anymore—now there is the BIGHORN WINTER.

A classic modified mummy expanded by four inches in width, the Bighorn Winter uses our "Tri-Channel Baffle System." This four-season bag uses five complexly sewn batts of Polarguard® (three top, two bottom).

Total Weight: 6 lbs., 4 oz.
Color: Royal



To -5°F ●

Polarguard®



● To -5°F

Goose Down

Highland

Designed to be ultra-lightweight, yet meet the warmth requirements of most three-season mountaineers, the HIGHLAND weighs in at a slim total of two lbs., 15 oz.

The HIGHLAND features baffles with five-inch spacing, tuck seam stitching, and 1.7 oz. nylon taffeta inner and outer shells. Even the interior dimensions remain the same and the differentially cut exterior shell is expanded to accommodate the extra down the loft of a -5°F bag demands.

Total Weight: 2 lbs., 15 oz.
Color: Royal

● To -5°F



Polarguard®

Polar Lite

The POLAR LITE is the end result of our efforts to achieve a maximum loft per weight ratio using Polarguard®.

This five layer bag (three top, two bottom) weighs well under five pounds and is rated to -5°F. The ample draft flap behind the zipper extends into the foot of the bag to prevent leakage in that often overlooked trouble spot.

Total Weight: 4 lbs., 14 oz.

Color: Assorted

Lite

The LITE, a modified mummy design, is the experienced backpacker's ideal three-season bag.

The Lite utilizes the "Tri-Channel Baffle System" making the loft to weight ratio of this bag unheard of in synthetic filled designs. The five Polarguard® layers (three top, two bottom) are all edge stabilized. The interior is constructed of Super Tri-Blend and features a full draft collar at the shoulder.

Total Weight: 5 lbs., 14 oz.

Color: Royal/Navy

To -10°F ●



Polarguard®

● To -20°F



Goose Down

North Country

The NORTH COUNTRY, with a -20°F rating, provides excellent winter protection for all but the cruelest of expeditionary use.

The 10 inches of loft is assisted by the five-inch spacing of the contoured, differentially cut baffles. The YKK coil zipper has an exterior wind flap to provide the most complete seal on the market. Frigid drafts are kept out by a full integral tube at the zipper and by a down-filled collar.

Total Weight: 3 lbs., 11 oz.

Color: Royal/Navy

Latok 1

The LATOK 1 was engineered for superior performance under the most adverse conditions.

The outer shell made of Gore-tex® taffeta laminate makes the bag not only waterproof, but allows body vapor from the interior to escape. It utilizes our unique "Tri-channel Baffle System" to give you more loft for the weight. The inner shell is made of our special high count taffeta.

Total Weight: 5 lbs., 14 oz.

Color: Royal

To -25°F ●



**Gore-Tex®
Polarguard®**

● To -25°F



Polarguard®

Extreme

For winter camping or high altitude mountaineering, the protection of the Wilderness Experience EXTREME bag is a must.

By using a modified and slightly more sophisticated version of our exclusive "Tri-Channel Baffle System" in conjunction with seven layers of Polarguard® (four top, three bottom) we were able to create a bag rated to -25°F. The interior is Super Tri-Blend with a complete draft collar at the shoulder.

Total Weight: 7 lbs., 4 oz.

Color: Brown



Glacier

For extended expeditionary conditions we recommend our GLACIER, with its 10½ inches of loft and minus 35° F rating.

The five-inch spacing of the baffles we've designed it with is important because it does not allow for movement of the down. Most bags have six to eight-inch spacing and the down's movement is not restricted. The contour cut baffles used vary in width with their greatest depth directly over the torso.

Total Weight: 4 lbs., 3 oz.
Color: Royal/Navvy

Winter Cloud

In the WINTER CLOUD, Wilderness Experience combines technology with that ancient lofting agent, goose down, to produce a state of the art sleeping bag for winter protection.

Rated to -35°, the bag incorporates a taffeta Gore-tex® shell which is entirely unquilted. This unique construction prevents any loss of thermal efficiency through the convective forces of the wind and also makes the exterior impervious to moisture.

Total Weight: 4 lbs.
Color: Royal



	TEMP.*	°F TEMP.	SHAPE	LOFT	FILL WEIGHT	TOTAL WEIGHT	LENGTH*	GIRTH	SUPER-BLEND INNER	COLLAR	STUFF SACK	STORAGE BAG
Southern Comfort Summer	●	+40	Rectangular	4"	42 oz. Polarguard	3 lbs., 6 oz.	R	31"	●		●	●
The Pro	●	+35	Modified Mummy	4½"	29 oz. Polarguard	3 lbs., 10 oz.	R,L	30"		●	●	●
Southern Lite	●	+35	Modified Mummy	4½"	29 oz. Polarguard	3 lbs., 2 oz.	R,L	30"			●	
Southern Comfort Winter	●	+20	Rectangular	6½"	73 oz. Polarguard	4 lbs., 3 oz.	R	31"	●		●	●
Northern Lite	●	+15	Modified Mummy	6½"	60 oz. Polarguard	4 lbs., 10 oz.	R,L	30"			●	
Point Five	●	+10	Modified Mummy	6½"	62 oz. Polarguard	5 lbs., 6 oz.	S,R,L	30"	●	●	●	●
Big Horn Summer	●	+10	Enlarged Mummy	7"	65 oz. Polarguard	5 lbs., 8 oz.	R,L	34"	●	●	●	●
Alpine	●	+5	Modified Mummy	7"	24 oz. Goose Down	2 lbs., 13 oz.	R,L	30"			●	●
Big Horn Winter	●	-5	Enlarged Mummy	8½"	75 oz. Polarguard	6 lbs., 4 oz.	R,L	34"	●	●	●	●
Highland	●	-5	Modified Mummy	8"	30 oz. Goose Down	3 lbs., 5 oz.	R,L	30"			●	●
Polarlite	●	-5	Modified Mummy	8"	68 oz. Polarguard	4 lbs., 14 oz.	R,L	30"			●	
Lite	●	-10	Modified Mummy	8"	70 oz. Polarguard	5 lbs., 14 oz.	S,R,L	30"	●	●	●	●
North Country	●	-20	Modified Mummy	9"	38 oz. Goose Down	4 lbs., 1 oz.	R,L	30"	●	●	●	●
Latok 1	●	-25	Modified Mummy	9"	70 oz. Polarguard	5 lbs., 14 oz.	R,L	30"		●	●	●
Extreme	●	-25	Modified Mummy	10"	90 oz. Polarguard	7 lbs., 4 oz.	S,R,L	30"	●	●	●	●
Glacier	●	-35	Modified Mummy	10½"	46 oz. Goose Down	4 lbs., 9 oz.	R,L	30"	●	●	●	●
Winter Cloud	●	-35	Modified Mummy	9½"	38 oz. Goose Down	4 lbs., 6 oz.	R,L	30"		●	●	●

* ● To +32°F ● To +15°F ● To 0°F ● To -10°F ● To -35°F

*S—Short (to 5'6") R—Regular (to 6') L—Long (to 6'6")

PLEASE NOTE: All weights are figured in regular size. Due to variances in Polarguard, weight may vary up to 10%.



Warranty

All Wilderness Experience® products are fully warranted to the original owner against defects in materials and work-manship, except as qualified below.* If a product fails due to a manufacturing defect, even after extended use, we will repair without charge, or replace it.

*Products insulated with Polarguard® or covered with Gore-Tex® will provide many years of service if properly cared for. However, the useful life of either of these is not known. Therefore, we warrant the properties and durabilities of each for three years from date of manufacture. All other components are covered by the full warranty above.

For free catalogs call or write:
20675 Nordhoff St., Chatsworth, CA 91311 • (800) 423-5331 (213) 998-3000